

# Cylindrical Blender/Dryers Specifications and Dimensions

## STANDARD FEATURES:

- .33 through 343 cubic feet capacity
- Stainless steel type 304 wetted parts
- Ribbon agitator for center discharge
- Designed for vacuum operation
- Baffled jacket for heating or cooling
- 80 grit finish on interior and exterior stainless steel surfaces
- Manway and inlet connections
- Safety limit switch on manway
- Stuffing boxes with easily disassembled split housing
- Teflon braided packing
- Manually operated slide gate valve
- All exterior non-stainless surfaces are painted with a white two-part epoxy coating
- Single speed drive
- 230/460 volt, 60 Hz, three phase, TEFC motors (see options for starters and controls)
- Blender is mounted on supports providing a discharge clearance of 36"
- Blender suitable for 30 lbs. per cu. ft.

## OPTIONAL FEATURES:

- Wetted parts of carbon steel, stainless steel type 316 and special alloys
- Continuous ribbon agitator for end discharge, interrupted ribbon for higher density materials, paddles for full or partial loads
- Internal pressure construction
- Sanitary type construction
- Spherical, Flush Type Ball, paddle, and knife gate discharge valves
- Horsepower to suit higher density materials
- Explosion-proof or washdown motors and controls
- Controls such as variable frequency drives, motor starters, and operator stations are available
- Electronic or mechanical soft start control systems
- Spray nozzles for liquid introduction
- Lumpbreakers for solids or agglomerates size reduction
- Dimpled jacket for heating or cooling
- Thermocouples for temperature readout
- Special gasket materials such as Viton are available
- Lantern rings for stuffing boxes

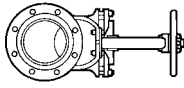


**CHARLES ROSS & SON COMPANY**

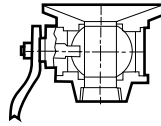
P.O. Box 12308, 710 Old Willets Path, Hauppauge, NY 11788 • Fax: 1-631-234-0691 • Tel: 1-631-234-0500

Website: [www.mixers.com](http://www.mixers.com) • Email: [sales@mixers.com](mailto:sales@mixers.com)

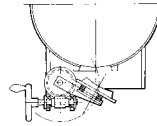
# Cylindrical Blender/Dryers Specifications and Dimensions



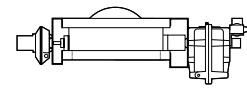
*Standard Slide Gate Valve – ideal for dust-tight, liquid-tight, or vacuum-tight operation.*



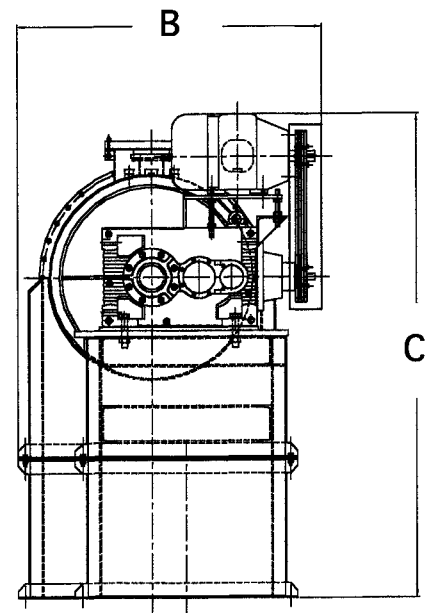
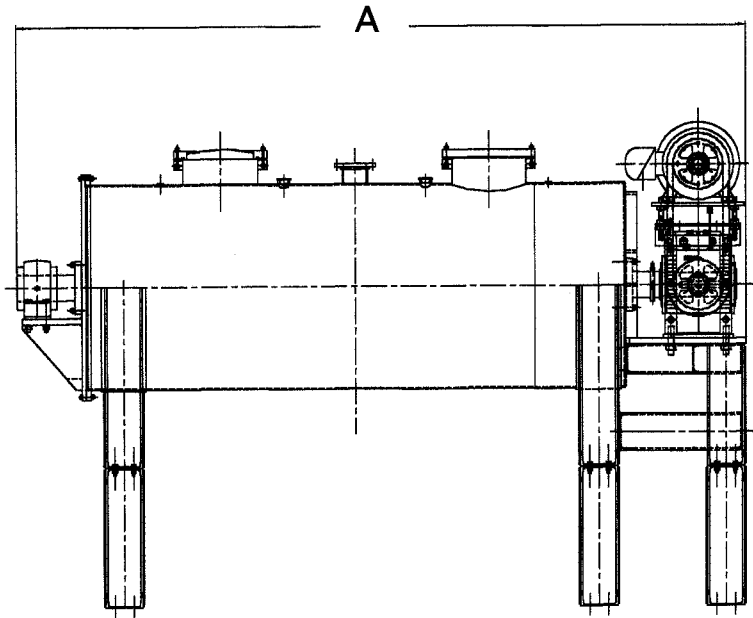
*Optional Ball Valve – For vacuum/pressure blending or liquid/ solid blending.*



*Optional Flush Plug Valve – equipped for manual or pneumatic operation, the Flush Plug Valve eliminates dead spots in the Ribbon Blender trough.*



*Optional Spherical Valve – pneumatically operated, this valve minimizes dead space and provides a large discharge opening.*



| Model Number | Working Capacity |      | Full Capacity |       | Motor HP | Agitator RPM | Trough Size |        | Overall Dimension |    |     | Shipping Wt. Lbs. |
|--------------|------------------|------|---------------|-------|----------|--------------|-------------|--------|-------------------|----|-----|-------------------|
|              | Cu. Ft.          | Gal. | Cu. Ft.       | Gal.  |          |              | Diameter    | Length | A                 | B  | C   |                   |
| 42C-1/2      | 0.33             | 2    | 1/2           | 3.7   | 3/4      | 66           | 9           | 16     | 42                | 25 | 51  | 300               |
| 42C-1        | 0.66             | 5    | 1             | 7 1/2 | 3/4      | 54           | 12          | 20     | 45                | 28 | 54  | 350               |
| 42C-5        | 3.5              | 25   | 5             | 37    | 1 1/2    | 46           | 17          | 38     | 67                | 30 | 66  | 800               |
| 42C-10       | 6.5              | 50   | 10            | 75    | 3        | 39           | 21          | 48     | 77                | 33 | 70  | 1200              |
| 42C-18       | 12               | 89   | 18            | 125   | 5        | 33           | 24          | 60     | 93                | 39 | 72  | 1500              |
| 42C-25       | 16.5             | 125  | 25            | 187   | 5        | 28           | 29          | 60     | 91                | 39 | 77  | 2300              |
| 42C-36       | 24               | 179  | 36            | 260   | 7 1/2    | 26           | 30          | 78     | 115               | 47 | 79  | 2800              |
| 42C-52       | 34.5             | 258  | 52            | 389   | 10       | 24           | 34          | 84     | 125               | 52 | 84  | 3900              |
| 42C-62.5     | 41.5             | 310  | 62            | 468   | 10       | 21           | 36          | 96     | 142               | 56 | 86  | 4600              |
| 42C-71       | 47               | 352  | 71            | 531   | 15       | 21           | 38          | 96     | 144               | 58 | 88  | 5200              |
| 42C-80       | 53               | 398  | 80            | 598   | 15       | 21           | 38          | 108    | 152               | 58 | 88  | 6000              |
| 42C-100      | 66.5             | 498  | 100           | 748   | 25       | 20           | 40          | 120    | 166               | 64 | 92  | 6600              |
| 42C-120      | 80               | 597  | 120           | 898   | 25       | 19           | 44          | 120    | 166               | 66 | 96  | 8000              |
| 42C-155      | 105              | 772  | 155           | 1159  | 30       | 16           | 50          | 120    | 166               | 72 | 102 | 3900              |
| 42C-180      | 120              | 895  | 180           | 1346  | 30       | 15           | 54          | 120    | 166               | 76 | 106 | 10200             |
| 42C-215      | 143              | 1072 | 215           | 1608  | 40       | 15           | 54          | 144    | 190               | 80 | 106 | 12500             |
| 42C-270      | 180              | 1343 | 270           | 2020  | 40       | 13           | 60          | 144    | 203               | 86 | 114 | 12750             |
| 42C-325      | 216              | 1616 | 325           | 2431  | 40       | 12           | 66          | 144    | 203               | 92 | 120 | 14025             |
| 42C-385      | 256              | 1915 | 385           | 2880  | 50       | 11           | 72          | 144    | 203               | 96 | 120 | 15300             |
| 42C-515      | 343              | 2566 | 515           | 3852  | 50       | 11           | 72          | 195    | 254               | 96 | 126 | 20500             |